

PYRAMIDE PRODUCTIONS PRESENTS

RAPHAËL PERSONNAZ

CLOTILDE HESME

ARTA DOBROSHI



OFFICIAL SELECTION
UN CERTAIN REGARD
FESTIVAL DE CANNES



THREE WORLDS **TROIS MONDES**

A FILM BY CATHERINE CORSINI





Al, a young man from a modest background is about to marry his boss' daughter, along with succeeding him as the head of a car dealership.

One night, while coming back from his bachelor party, he commits a hit-and-run accident, urged by his two childhood friends present in the car.

The next day, gnawed with guilt, Al decides to inquire about his victim. What he does not know is that Juliette, a young woman, has witnessed the entire accident from her balcony. She is the one who had called 911 and helped the victim's wife Véra, a Moldavian illegal-immigrant.

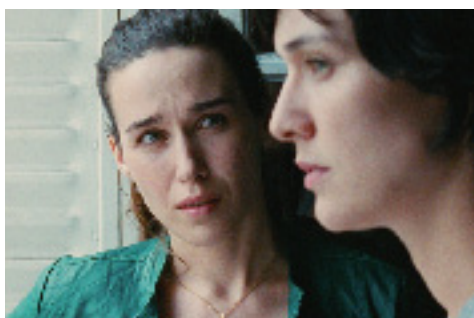
But when Juliette recognizes Al as the reckless driver in the Hospital corridor, she is unable to denounce him...

Al, un jeune homme d'origine modeste, est sur le point d'épouser la fille de son patron et de succéder à ce dernier à la tête de sa concession automobile. Une nuit, après l'enterrement de sa vie de garçon, il renverse un inconnu mais, poussé par ses deux amis d'enfance, il abandonne le blessé et s'enfuit.

Le lendemain, rongé par la culpabilité, il décide de prendre des nouvelles de l'accidenté. Ce qu'il ignore, c'est que la nuit de l'accident, une jeune femme, Juliette, a tout vu depuis son balcon. Descendue porter secours à la victime, Juliette s'est mise en tête d'aider sa femme, Véra, une Moldave sans-papiers.

Mais lorsque Juliette reconnaît dans un couloir de l'hôpital l'homme qu'elle a vu s'enfuir après l'accident, elle est incapable de le dénoncer...

Al Raphaël Personnaz Juliette Clotilde Hesme Vera Arta Dobroschi
Franck Reda Kateb Martin Alban Aumard Marion Adèle Haenel
Testard Jean-Pierre Malo Frédéric Laurent Capelluto Adrian Rasha Bukvic



A film by Catherine Corsini Screenplay Catherine Corsini & Benoît Graffin

With the collaboration of Lise Macheboeuf & Antoine Jaccoud Original Score Grégoire Hetzel Photography Claire Mathon
 Sound Yves-Marie Omnes, Benoît Hillebrant, Olivier Dô Hùu Editing Muriel Breton Set Mathieu Menut

Costumes Anne Schotte Casting Brigitte Moidon, Arda 1st AD Guillaume Huin Continuity Camille Brottes Beaulieu

Production manager François Pascaud Line producer Marc Fontanel Associate producer Stéphane Parthenay

Produced by Fabienne Vonier Production company PYRAMIDE PRODUCTIONS In coproduction with FRANCE 3 CINÉMA

With the participation of CANAL+, FRANCE TÉLÉVISIONS, CINÉ + With the support of RÉGION ÎLE-DE-FRANCE In partnership
 with CNC In association with CINÉIMAGE 6, LA BANQUE POSTALE IMAGE 5, MANON 2

Developed with the support of ANGOA and PROCIREP

France - 2012 - French/Moldovan -101mn - 35mm/DCP - Color - Scope - Dolby SRD



WORLD SALES Pyramide International - PARIS 5, rue du Chevalier de Saint George, 75008 paris -33 (0) 1 42 96 02 20